

# Headache Questionnaire

- 1. Do your headaches awaken you in the middle of the night?

# Headache Questionnaire



- 2. Do you ever awaken with your jaws clenched together?

# Headache Questionnaire



- 3. When you arise in the morning, do you feel refreshed, or, are you troubled by a headache that feels like it's just getting started?

# Headache Questionnaire



- 4. When you awaken do you have pain or tightness in the temple or cheek areas?

# Headache Questionnaire



- 5. Do your headaches start in the area of your temples or behind your eyes?

# Headache Questionnaire



- 6. Do you get pain in front of your ears a lot?

# Headache Questionnaire



- 7. Do you hear clicking or popping when you open and close your jaws?

# Headache Questionnaire



- 8. When you close your teeth together slowly, do they hit in one place, and then slide into a tight bite as you clench harder? (as opposed to closing to the exact right spot without deviation?)

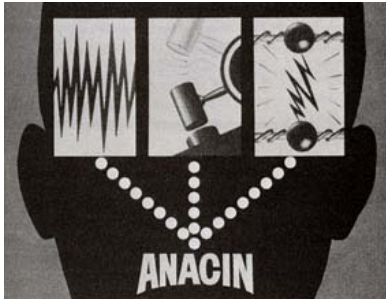
# Headache Questionnaire



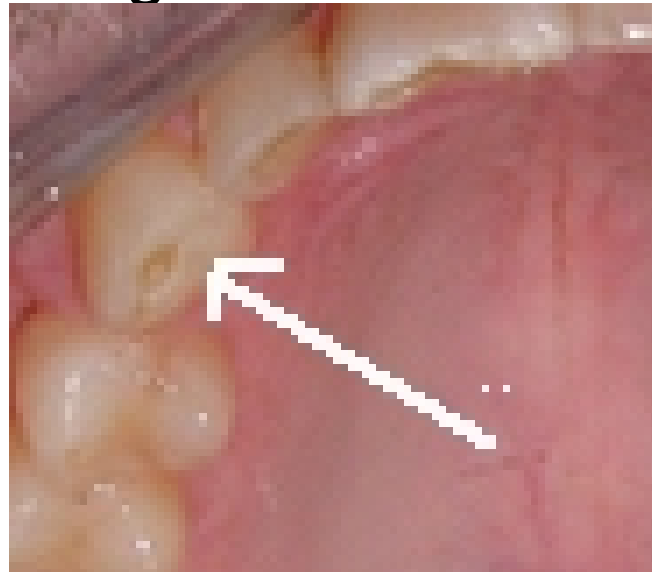
- 9. Do the edges of your front teeth show wear like this?



# Headache Questionnaire



- 10. Do the tips of your eye teeth or back teeth show wear to the extent that the enamel has been worn through and the dentin is showing like this?



# Headache Questionnaire



- If you've answered yes to any of these questions, I am hopeful that we can help you.

